

CREATING
POWER
SOLUTIONS



Flywheel-Integrated Permanent Magnet Generators

Hatz Energy Solutions



The Extremely Compact Way of High-End Power Generation

The vision behind Hatz products has never changed: enable others to be more efficient by fusing professional expertise and the spirit of innovation into reliable, easy-to-use power solutions.

The flywheel-integrated permanent magnet generator (fiPMG) — for use in hybrid systems, as power outage backup or for continuous power supply — proves this once again.

Flexibility and freedom in action

The fiPMG generates electricity when you need it. As an onboard battery charger, for example, this DC generator guarantees that machines always have enough power, wherever they are being used. This ensures that every job can be reliably completed, regardless of the battery's charge status. Thanks to the intelligent CAN connection to machines' battery management systems, the DC generator only charges batteries when machines really need it.

More performance with no compromise

Engines equipped with fiPMG are only slightly larger and heavier than normal engines. Compared to conventional flange-mounted generators, the integrated fiPMG saves on 85 percent of the weight and almost 90 percent of the installation space. The power take-off shaft, which is still available, makes the machine even more flexible in its design. If the generator is used purely as an engine, a hydraulic pump, for example, can be conventionally flange-mounted using just four screws.

Less fuel consumption, fewer emissions

The fiPMG contributes to emission reduction by allowing for longer machine operation in battery-electric drive mode. Machines can also be operated in emission-free mode where necessary. This reduces the average operation time of the combustion engine and protects the environment. When operated in hybrid mode, machines can save up to 40 percent on fuel, making a significant contribution to curbing emissions.

Ready for the Internet of Things (IoT)

Thanks to integrated Hatz E1 technology, the fiPMG can be integrated into fleet management systems and cloud environments via mobile communications. Operators are able to remotely access the most important operating parameters and monitor the condition of the drive. The fiPMG also allows geofencing and the implementation of future business models such as pay-per-use.

Limitless operation

The 1B30E and 1B50E engines with fiPMG are the only engines on the market today certified as both Stage V and Tier 4 final across their entire speed range. Machine manufacturers benefit from less component variability and are able to develop units that can be operated in both the EU and the US, including California, without any adjustments to the engine.

Always ready for use

The fiPMG shows its strengths in applications where maximum reliability is required. Thanks to onboard battery charging, there is no risk of safety-relevant devices failing. This ensures that machines always remain ready for use regardless of their battery's charge status or the availability of an external power supply. This is particularly important for construction infrastructure, like electric road signs and lighting systems, for example.



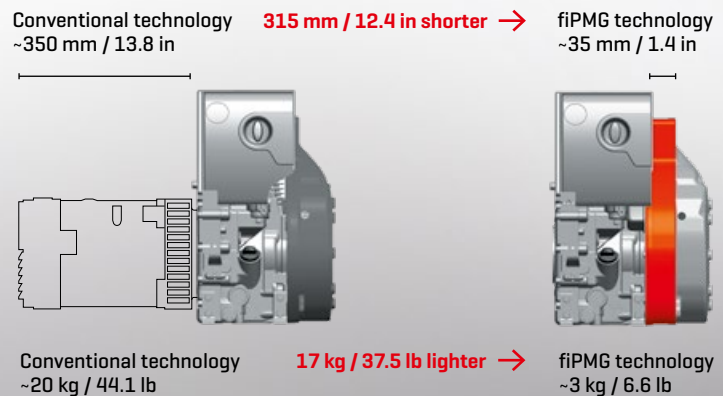
The Benefits to You

- **Load-dependent speed**
Quieter operation, fewer emissions, less wear and fewer maintenance costs
- **Double certification: US Tier 4 final & EU Stage V**
Meeting the world's various emission standards with one product
- **Extremely compact and lightweight design**
Easy integration, even into existing machine architecture
- **E1 technology**
Ready for IoT connectivity and fleet management solutions
- **Silent Pack version**
Ready-made Silent Pack enclosure when noise reduction plays an important role
- **Main power take-off shaft freely available**
Connection of additional power take-offs possible such as a hydraulic pump
- **Nearly pure sine wave for AC versions**
High voltage and frequency quality
- **Pre-assembled and pre-tested drive package**
Less assembly and testing for machine manufacturers
- **Battery charger with automatic start/stop function**
Extremely energy-efficient and self-sufficient operation
- **Efficient and smart control**
Communication between battery management system and battery charger for the best possible charging cycles and long battery life

fiPMG

Conventional vs. Permanent Magnet

Compared to the conventional design of the engine/generator unit, the flywheel-integrated permanent magnet design is 315 mm / 12.4 in shorter and 17 kg / 37.5 lb lighter. The contactless PMG system has a high degree of efficiency at over 85 percent.



fiPMG with 1B50E engine



fiPMG with 1B30E engine



fiPMG Silent Pack

Always Ready for Use Thanks to the Universal Solution From Hatz

Electric machines driven by batteries or by unreliable grid are always at risk of losing their power before work operations are complete. For such applications, the fiPMG reliably supplies these consumers with direct or alternating current (DC or AC) even under the most adverse circumstances. Whether it's solar powered units operating at night or electric consumers being used on the field without grid: the fiPMG ensures that the necessary energy is always available.

Universal power supply

Unique design, smart features, universally applicable: Hatz offers a power solution, both as AC and DC generators, as an OEM kit for installation in machines or as a finished generator in a Silent Pack enclosure.

Battery charger for large cranes

In order to protect the main engine unit of large cranes and avoid idling operation, Hatz has developed a 28 Volt DC / 100 A battery charger. This ensures that the battery of the additional drive is always charged. The drive supplies the machine's auxiliary consumers when the main engine is stopped.

Battery electric lifting platform

Rented lifting platforms are subject to a wide variety of both indoor and outdoor application scenarios. If lift platforms are used separate from power infrastructure, in agricultural applications such as fruit harvesting for example, batteries with a low charge can cause problems. Using the fiPMG from Hatz as an onboard charger prevents these problems from occurring.

Solar-powered road signs and light towers

Mobile, solar-powered LED road signs indicating dangers further down the road protect lives. Light towers provide the necessary lighting at construction sites. In the event of snowfall or a defect in the solar panels, things can get dangerous. fiPMG-equipped engines can be used as emergency units to bridge gaps in supply, thus increasing safety on the road.

Battery-powered electric agricultural robots

Agricultural field robots remain in near continuous operation while working in the fields, but usually do so without available electricity infrastructure. The fiPMG ensures that operations can be successfully completed in the fields without running out of battery charge. Thanks to its hybrid drive, it also saves up to 40 percent fuel. A fiPMG driven machine is thus the optimal solution for the agricultural business.

Telecommunications masts

Antennas are powered by batteries with a voltage of 56 V DC. For devices located in rural areas, uninterrupted power supply is essential. The fiPMG offers the required reliability for this area of application. For large communications providers, fleet management is also of the utmost importance when it comes to centrally monitoring all connected antennas. The fiPMG completely satisfies both requirements.

Protection against power failures

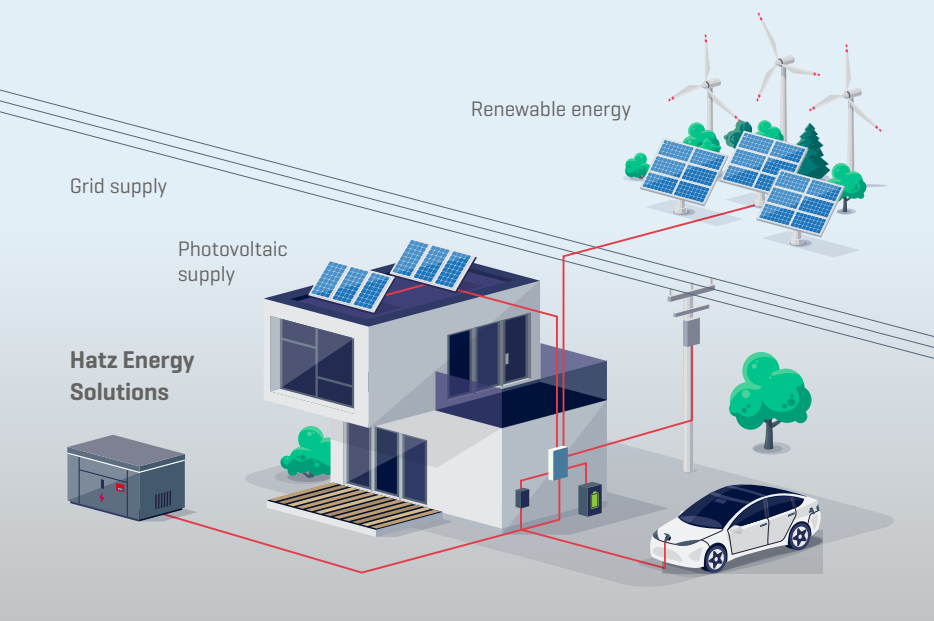
The fiPMG provides reliable power supply as AC oder DC generators in situations where there is an increased likelihood of power failure, such as frequent storms, insufficient sunlight for solar-powered devices or no wind. Even with regionally insulated buildings and appliances being operated away from the power grid, thanks to its fuel consumption of only half a liter per hour, the fiPMG safely bridges longer phases without an external power supply. This can include lighthouses, telecommunications antennas and ecological multi-source power plants.



Secure the mission of critical appliances

Numerous applications benefit from the advantages of Hatz fIPMG. This includes among others:

- mobile lighting towers
- solar and conventional mobile road signal equipment
- mobile communications infrastructure
- electrical lifting equipment
- motor homes
- agricultural field robots
- trade show trailers
- range extender for full battery driven equipment
- auxiliary power units in construction machinery
- ecological power plants



fiPMG Battery Chargers and Generators

Hatz fiPMG technology can be combined with the reliable and robust 1B30E and 1B50E single-cylinder engines. The generator-engine combinations are available in vertical and horizontal versions. As the generator can be integrated into an engine's flywheel, the fiPMG is only three kilograms or 6.6 pounds heavier and 35 millimeters or 1.4 inches longer than the engine alone. Conventional flange-mounted generators are about 350 millimeters or 13.9 inches long and weigh around 20 kilograms or 44.1 pounds. This means that engines with fiPMG can be flexibly integrated into almost any machine, as no major design changes are required. Furthermore, with an average efficiency of 85 percent, permanent magnet generators are extremely efficient.

Thanks to E1 technology and electronically controlled injection, the engines are operated depending on load and with variable speed. The drive and generator have additional start/stop functionality. If a battery is empty, the generator starts automatically. Once it is fully charged, the generator stops the charging process automatically.

Thanks to speed-dependent operation, efficiency increases while noise levels, emissions, wear and maintenance costs decrease.

Engines are also available in mechanically controlled versions. Generators can additionally be designed for direct current (DC) or for alternating current (AC), depending on the customer's preference.

Battery Chargers

Type	BD 2800-28 BD 2800-28 Silent Pack	BD 3000-56 BD 3000-56 Silent Pack	BD 5600-28	BD 5600-56
Max. power @ cos[φ] 1.0 [kW]	2.8	3.0	5.6	5.6
Max. current [A]	100	55	200	100
Voltage [V]	28	56	28	56
Frequency [Hz]	-			
Type of voltage	DC			
Generator	flywheel-integrated Permanent Magnet Generator (fiPMG)			
Inverter output accuracy acc. ISO 8528-5	class G4			
Total electrical efficiency [%]	85.5			
Engine	1B30E		1B50E	
Speed range [rpm]	1800 – 3100, full variable according to load		1800 – 3000, full variable according to load	
Start system	electric, 12 V			
Emission certificate	dual type plate: EU Stage V + US EPA/CARB Tier 4 final			
Noise level at 7 meters [dB(A)] engine / with Silent Pack	72 @ 2300 rpm / 64.6 @ ½ load	72 @ 2300 rpm / 64.6 @ ½ load	76 @ 2300 rpm / -	76 @ 2300 rpm / -
Fuel consumption @ ¾ load [l/h / gal/h]	0.7 / 0.18 @ 2300 rpm	0.7 / 0.18 @ 2300 rpm	1.2 / 0.31 @ 2300 rpm	1.2 / 0.31 @ 2300 rpm
Dimensions engine+fiPMG L x W x H [mm / in]	331 x 410 x 430 13.03 x 16.14 x 16.93	331 x 410 x 430 13.03 x 16.14 x 16.93	357 x 440 x 480 14.05 x 17.32 x 18.89	357 x 440 x 480 14.05 x 17.32 x 18.89
Dimensions Silent Pack L x W x H [mm / in]	440 x 766 x 463 17.32 x 30.16 x 18.22	440 x 766 x 463 17.32 x 30.16 x 18.22	-	-
Weight engine+fiPMG [kg / lb]	59 / 130	59 / 130	75 / 165	71 / 157
Weight engine+fiPMG+Silent Pack [kg / lb]	102 / 224	102 / 224	-	-

Options 1B30E and 1B50E engines

- Silent Pack version
- Additional fuel filter with water separator and support for machine mounting
- Additional oil sump with more capacity for longer maintenance intervals
- Hydro supported rubber mounting – ideal for variable speed
- Oil drain valve for easy maintenance in case of enclosure
- Additional oil sump for 1B30VE with 3 litres capacity including oil filter



fiPMG with horizontal shaft engine



All fiPMG models with 1B30E (horizontal shaft engines) are also available with vertical shaft engines (1B30VE).



fiPMG Silent Pack with sound insulation

Generators

	GD 3000-230 GD 1500-115	GD 3000-230 Silent Pack GD 1500-115 Silent Pack	GD 3000-120 GD 3000-120 Silent Pack	GD 3200-120 Silent Pack RV
	3.0 1.5		3.0	3.2
	13		25	26.7
	230 115		120	120
	50 60		60	
	AC			
	flywheel-integrated Permanent Magnet Generator (fiPMG)			
	class G2			
	87.4		84.6	
	1B30E			
	1800 – 3100, full variable according to load		3100, constant	
	electric, 12 V			
	dual type plate: EU Stage V + US EPA/CARB Tier 4 final			
	70 @ 2000 rpm / -	- / 64.6 @ ½ load	68 @ 1500 rpm / 64.6 @ ½ load	- / 64.6 @ ½ load
	0.7 / 0.18 @ 2000 rpm		0.5 / 0.13 @ 1500 rpm	
	331 x 410 x 430 13.03 x 16.14 x 16.93	-	331 x 410 x 430 13.03 x 16.14 x 16.93	-
	-	440 x 766 x 463 17.32 x 30.16 x 18.22	440 x 766 x 463 17.32 x 30.16 x 18.22	440 x 766 x 463 17.32 x 30.16 x 18.22
	59 / 130	-	59 / 130	-
	-	102 / 224	102 / 224	102 / 224

Europe

Motorenfabrik Hatz GmbH & Co. KG
Ernst-Hatz-Str. 16
94099 Ruhstorf a. d. Rott
Germany
Phone +49 8531 319-0
marketing@hatz.com
hatz.com

Hatz Great Britain Ltd.
4 Alan Bray Close
Dodwells Bridge Ind Est
Hinckley, Leics. LE 10 3BP
Great Britain
Phone +44 1455 62 21 00
enquiries@hatz.co.uk
hatzgb.com

Hatz France S.A.R.L.
5 bis rue Lavoisier
CS 60042
69687 Chassieu Cedex
France
Phone +33 4 78 90 73 25
commercial@hatz.fr
hatz.fr

Hatz Nederland BV
Antonie van Diemenstraat 38
4104 AE Culemborg
Netherlands
Phone +31 345 47 00 40
info@hatz.nl
hatz.com

Motores Hatz Espana S.L.U.
Poligono Valdeconsejo
C/Aneto Parc.4D
50410 Cuarte de Huerva [Zaragoza]
España
Phone +34 976 108 128
info@motoreshatz.com
motoreshatz.com

Hatz Italia S.R.L.
Via Aldo Moro, 44/C
41030 Bomperto [MO]
Italy
Phone +39 059 25 41 29
info@hatzitalia.it
hatz.com

Americas

Hatz Americas, Inc.
W229 N1645 Westwood Drive
Waukesha WI 53186-1153
U.S.A.
Phone +1 262 544 0254
info@hatzamericas.com
hatzamericas.com

Asia

Motorenfabrik Hatz GmbH & Co. KG
Xiamen Representative Office
501B Huiteng Metropolis
No. 321 Jiahe Road
Xiamen
China
Phone +86 592 520 45 28
rita.chen@hatz.com.cn
hatz.com.cn

Australia

Hatz Australia Pty. Ltd.
7 Hume road
Smithfield NSW 2164
Australia
Phone +61 2 87 88 79 99
engines@hatz.com.au
hatz.com.au



**CREATING
POWER
SOLUTIONS**

000040525400 enWW 02.24 Printed in US
We reserve the right to make all changes that
serve technical development.